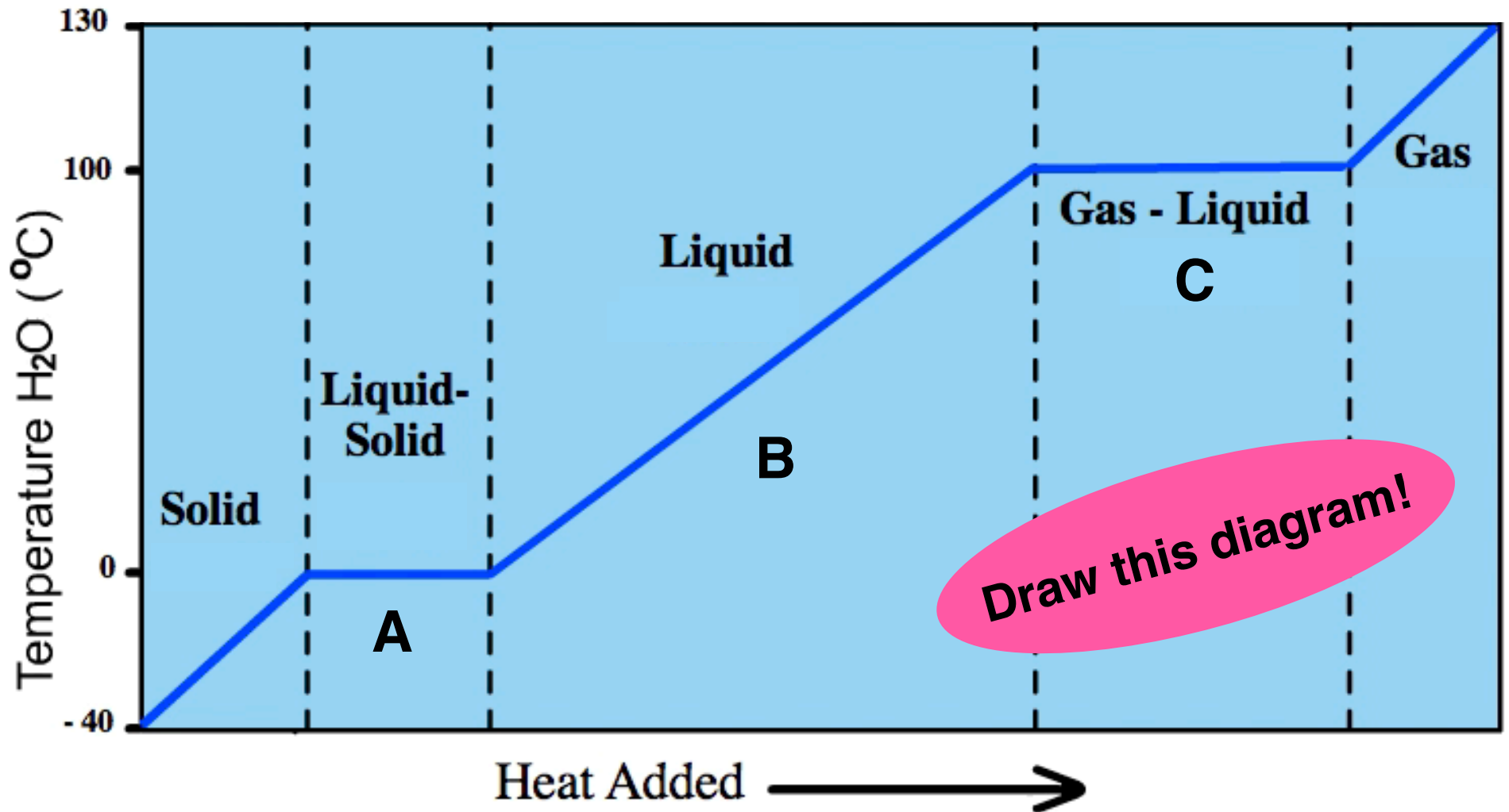


# Heating Curve of Water



# Heating Curve of Water

A: When ice water melts

- all added heat goes to breaking hydrogen bonds
- temperature remains constant during phase change (0 °C)

# Heating Curve of Water

B: When liquid water is heated

- all energy goes to increasing kinetic energy (energy of motion) of the molecules
- temperature increases

# Heating Curve of Water

C: When liquid water boils

- all heat goes to breaking the remaining hydrogen bonds
- temperature remains constant during phase change (100 °C)